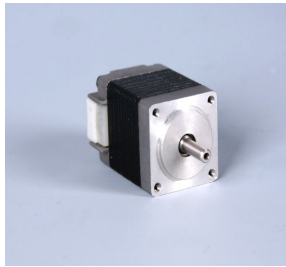


Silniki krokowe



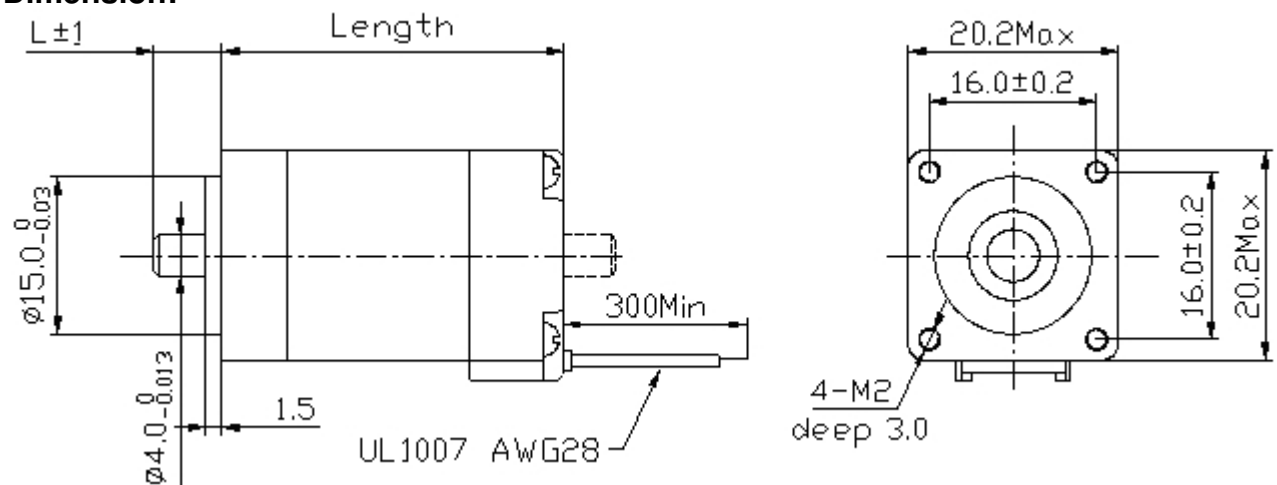
1.8° Size 20mm High Torque Hybrid Stepping Motor

Item	Specifications
Step Angle	1.8°
Step Angle Accuracy	±5% (full step, no load)
Resistance Accuracy	±10%
Inductance Accuracy	±20%
Temperature Rise	80° C Max.(rated current,2 phase on)
Ambient Temperature	-20° C~+50° C
Insulation Resistance	100MΩMin. ,500VDC
Dielectric Strength	500VAC for one minute
Shaft Radial Play	0.02Max. (450 g-load)
Shaft Axial Play	0.08Max. (450 g-load)
Max. radial force	20N
Max. axial force	2N

Size 20mm High Torque Hybrid Stepping Motor Specifications

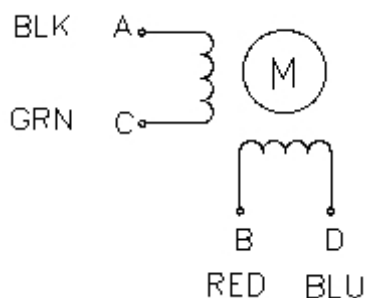
Model No.	Rated Voltage	Current /Phase	Resistance /Phase	Inductance /Phase	Holding Torque	# of Leads	Rotor Inertia	Weight	Length
Single Shaft	V	A	Ω	mH	g.cm		kg-m ²	kg	mm
SM20HT30-0604A	3.9	0.6	6.5	1.7	180	4	2.0x10 ⁻⁷	0.06	30
SM20HT33-0604A	3.9	0.6	6.5	1.7	180	4	2.0x10 ⁻⁷	0.06	33
SM20HT42-0804A	4.32	0.8	5.4	1.5	300	4	3.6x10 ⁻⁷	0.08	42

Dimension:



L= 6.5, 6.5, 15

Wiring Diagram:



1.8° Size 28mm High Torque Hybrid Stepping Motor

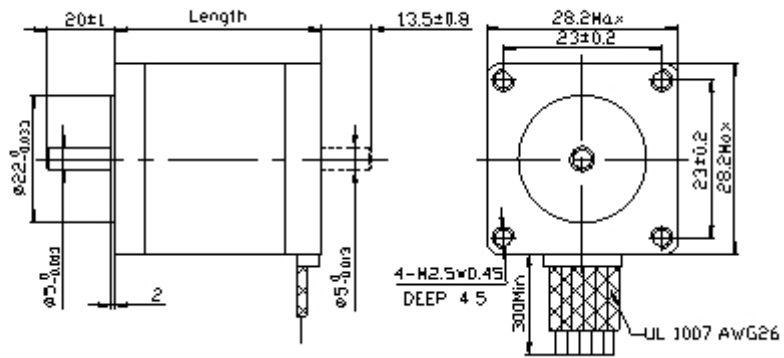
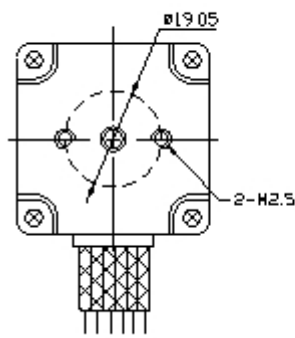
Item	Specifications
Step Angle	1.8°
Step Angle Accuracy	±5% (full step, no load)
Resistance Accuracy	±10%
Inductance Accuracy	±20%
Temperature Rise	80° C Max. (rated current, 2 phase on)
Ambient Temperature	-20° C ~ +50° C
Insulation Resistance	100MΩ Min. .500VDC
Dielectric Strength	500VAC for one minute
Shaft Radial Play	0.02Max. (450 g-load)
Shaft Axial Play	0.08Max. (450 g-load)
Max. radial force	28N (20mm from the flange)
Max. axial force	10N

Size 28mm High Torque Hybrid Stepping Motor Specifications

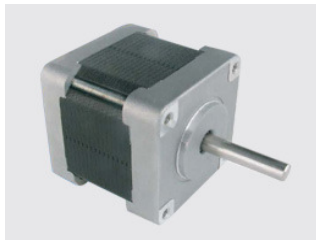
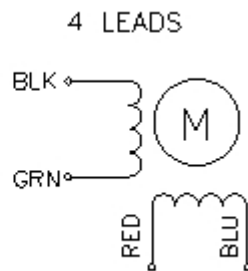
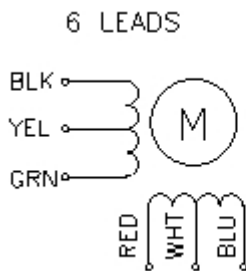
Model No.		Rated Voltage	Current /Phase	Resistance /Phase	Inductance /Phase	Holding Torque	# of Leads	Rotor Inertia	Weight	Length
Single Shaft	Double Shaft	V	A	Ω	mH	g. cm		kg-m ²	kg	mm
SM28HT32-0956A	SM28HT32-0956B	2.66	0.95	2.8	0.8	430	6	9x10 ⁻⁷	0.11	31.5
SM28HT32-0674A	SM28HT32-0674B	3.8	0.67	5.6	3.4	600	4			
SM28HT45-0956A	SM28HT45-0956B	3.4	0.95	3.4	1.2	750	6	12x10 ⁻⁷	0.14	44.5
SM28HT45-0674A	SM28HT45-0674B	4.56	0.67	6.8	4.9	950	4			
SM28HT51-0956A	SM28HT51-0956B	4.4	0.95	4.6	1.8	900	6	18x10 ⁻⁷	0.2	50.5
SM28HT51-0674A	SM28HT51-0674B	6.2	0.67	9.2	7.2	1200	4			

Dimension

with double shaft only



● Wiring Diagram:



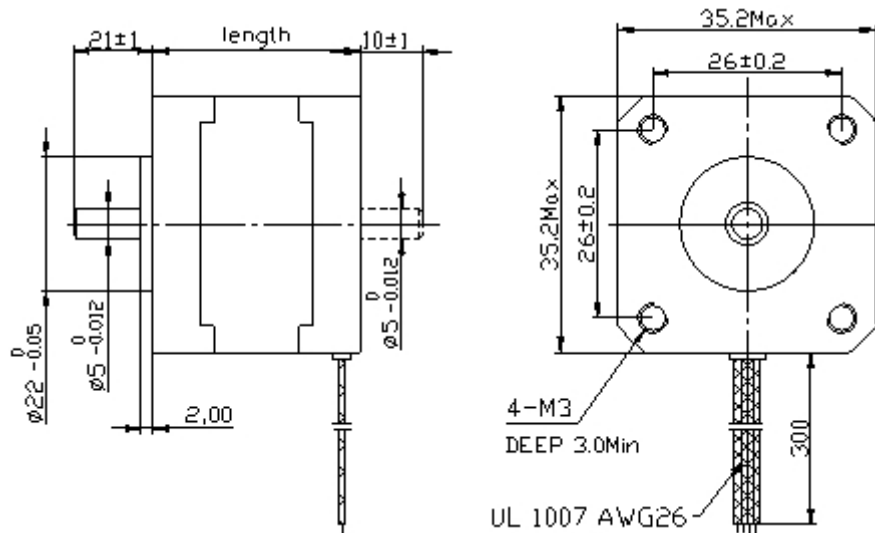
1.8° Size 35mm Hybrid Stepping Motor

Item	Specifications
Step Angle	1.8°
Step Angle Accuracy	±5% (full step, no load)
Resistance Accuracy	±10%
Inductance Accuracy	±20%
Temperature Rise	80° C Max.(rated current,2 phase on)
Ambient Temperature	-20° C~+50° C
Insulation Resistance	100MΩMin. ,500VDC
Dielectric Strength	500VAC for one minute
Shaft Radial Play	0.02Max. (450 g-load)
Shaft Axial Play	0.08Max. (450 g-load)
Max. radial force	28N (20mm from the flange)
Max. axial force	10N

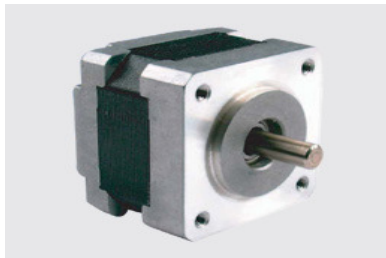
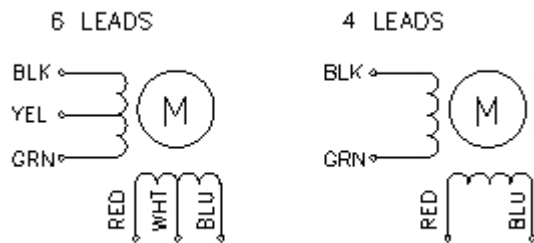
Size 35mm Hybrid Stepping Motor Specifications

Model No.		Rated Voltage	Current /Phase	Resistanc e /Phase	Inductanc e /Phase	Holding Torque	# of Leads	Rotor Inertia	Weight	Detent Torqu e	Length
Single shaft	Double shaft	V	A	Ω	mH	g-cm	#	g-cm ²	kg	g-cm	mm
SM35ST26-0284A	SM35ST26-0284B	7.4	0.28	26	27	700	4	10	0.13	60	26
SM35ST28-0504A	SM35ST28-0504B	10	0.5	20	18	1000	4	11	0.14	80	28
SM35ST36-1004A	SM35ST36-1004B	2.7	1.0	2.7	4.3	1400	4	14	0.18	100	36

Dimension :



Wiring Diagram



0.9° Size 35mm Hybrid Stepping Motor Technique parameter

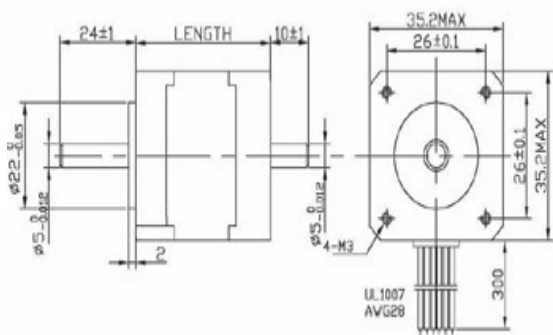
Item	Specification
Step Angle Accuracy	±5% □ full step, no load □
Resistance Accuracy	±10%
Inductance Accuracy	±20%
Temperature Rise	80 □ Max. (rated current, 2 phase on)
Ambient	-10 □ -+50 □

Temperature	
Insulation Resistance	100MΩMin.500VDC
Dielectric Strength	500VAC for one minute
Shaft Radial Play	0.06Max.(450 g-load)
Shaft Axial Play	0.08Max.(450 g-load)

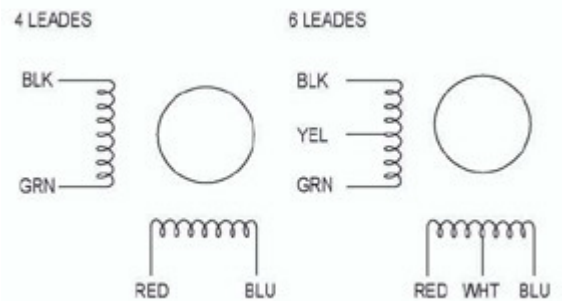
Technique Specification

Series Model	Step Angle (°)	Motor Length (L=mm)	Rated Current (A)	Phase Resistance (Ω)	Phase Inductance (mH)	Holding Torque (kg.cm Min)	Rotor Inertia (g.cm ²)	Lead Wire (No.)	Motor Weight (g)
SM35HT24-01	1.8/0.9	20	0.5	25	13	0.6	8	4	80
SM35HT26-02	1.8/0.9	20	0.5	13	15	0.5	8	6	80
SM35HT27-01	1.8/0.9	27	0.3	20.4	22	0.9	11	4	100
SM35HT27-02	1.8/0.9	27	0.8	5.5	5.8	1.2	11	4	110
SM35HT27-03	1.8/0.9	27	0.5	20	15	1.2	11	4	110
SM35HT34-01	1.8/0.9	34	0.5	25	25	1.8	13	4	180
SM35HT34-02	1.8/0.9	34	0.8	6.5	10	1.8	13	4	180
SM35HT36-30	1.8/0.9	34	0.4	30	15	1.4	13	6	180
SM35HT44-02	1.8/0.9	44	1.0	3.6	4.32	1.9	15	4	250

Dimensions



Wiring Diagram



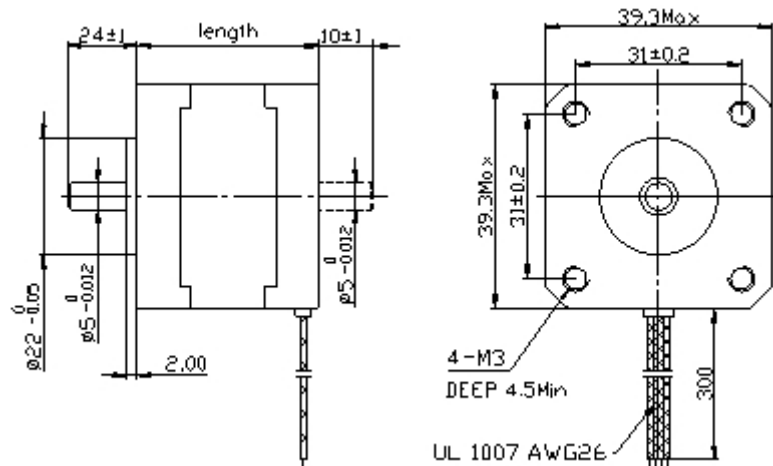
1.8° size 39mm Hybrid Stepping Motor

Item	Specifications
Step Angle	1.8°
Step Angle Accuracy	±5% (full step, no load)
Resistance Accuracy	±10%
Inductance Accuracy	±20%
Temperature Rise	80 °C Max. (rated current, 2 phase on)
Ambient Temperature	-20 °C ~ +50 °C
Insulation Resistance	100MΩMin. ,500VDC
Dielectric Strength	500VAC for one minute
Shaft Radial Play	0.02Max. (450 g-load)
Shaft Axial Play	0.08Max. (450 g-load)
Max. radial force	28N (20mm from the flange)
Max. axial force	10N

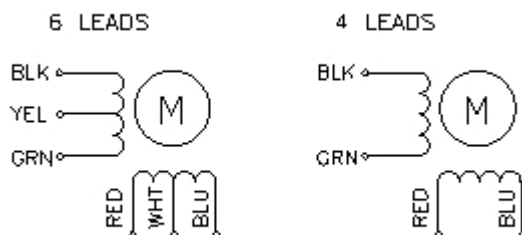
Size 39mm Hybrid Stepping Motor Specifications

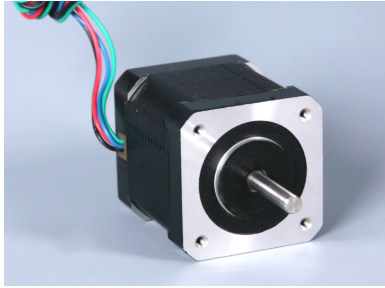
Model No.		Rated Voltage	Current /Phase	Resistance /Phase	Inductance /Phase	Holding Torque	# of Leads	Rotor Inertia	Weight	Detent Torque	Length
Single shaft	Double shaft	V	A	Ω	mH	g-cm		g-cm ²	kg	g-cm	mm
SM39ST20-0404A	SM39ST20-0404B	2.64	0.4	6.6	7.5	650	4	11	0.12	50	20
SM39ST20-0506A	SM39ST20-0506B	6.5	0.5	13	7.5	800	6				
SM39ST34-0404A	SM39ST34-0404B	12	0.4	30	32	2100	4	20	0.18	120	34
SM39ST34-0306A	SM39ST34-0306B	12	0.3	40	20	1300	6				
SM39ST38-0504A	SM39ST38-0504B	12	0.5	24	45	2900	4	24	0.2	180	38
SM39ST38-0806A	SM39ST38-0806B	6	0.8	7.5	6	2000	6				
SM39ST44-0304A	SM39ST44-0304B	12	0.3	40	100	2800	4	40	0.25	250	44

Dimension:



Wiring Diagram:





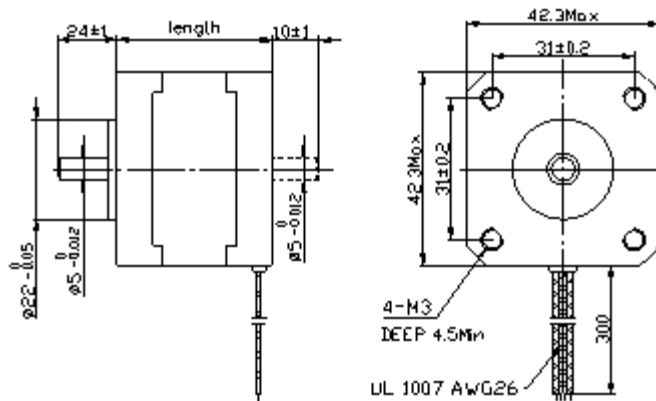
1.8° Size 42mm High Torque Hybrid Stepping Motor

Item	Specifications
Step Angle	1.8°
Step Angle Accuracy	±5% (full step, no load)
Resistance Accuracy	±10%
Inductance Accuracy	±20%
Temperature Rise	80 °C Max. (rated current, 2 phase on)
Ambient Temperature	-20 °C ~ +50 °C
Insulation Resistance	100MΩ Min. , 500VDC
Dielectric Strength	500VAC for one minute
Shaft Radial Play	0.02Max. (450 g-load)
Shaft Axial Play	0.08Max. (450 g-load)
Max. radial force	28N (20mm from the ange)
Max. axial force	10N

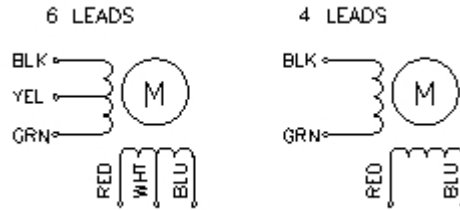
Size 42mm High Torque Hybrid Stepping Motor Specifications

Model No.		Rated Voltage	Current /Phase	Resistance /Phase	Inductance /Phase	Holding Torque	# of Leads	Rotor Inertia	Weight	Detent Torque
Single Shaft	Double Shaft	V	A	Ω	mH	Kg-cm		g-cm ²	kg	g-cm
SM42HT25-0404A	SM42HT25-0404B	9.6	0.4	24	36	1.7	4	20	0.15	75
SM42HT33-0956A	SM42HT33-0956B	4	0.95	4.2	2.5	1.6	6	35	0.22	120
SM42HT33-0406A	SM42HT33-0406B	9.6	0.4	24	15	1.6	6			
SM42HT33-0316A	SM42HT33-0316B	12	0.31	38.5	21	1.6	6			
SM42HT33-1334A	SM42HT33-1334B	2.8	1.33	2.1	2.5	2.2	4	54	0.28	150
SM42HT38-1206A	SM42HT38-1206B	4	1.2	3.3	3.2	2.6	6			
SM42HT38-0806A	SM42HT38-0806B	6	0.8	7.5	6.7	2.6	6			
SM42HT38-0406A	SM42HT38-0406B	12	0.4	30	30	2.6	6			
SM42HT38-1684A	SM42HT38-1684B	2.8	1.68	1.65	3.2	3.6	4			
SM42HT47-1206A	SM42HT47-1206B	4	1.2	3.3	2.8	3.17	6	68	0.35	200
SM42HT47-0806A	SM42HT47-0806B	6	0.8	7.5	6.3	3.17	6			
SM42HT47-0406A	SM42HT47-0406B	12	0.4	30	25	3.17	6			
SM42HT47-1684A	SM42HT47-1684B	2.8	1.68	1.65	2.8	4.4	4			
SM42HT60-1206A	SM42HT60-1206B	7.2	1.2	6	7	6.5	6	102	0.5	280

Dimension



Wiring Diagram



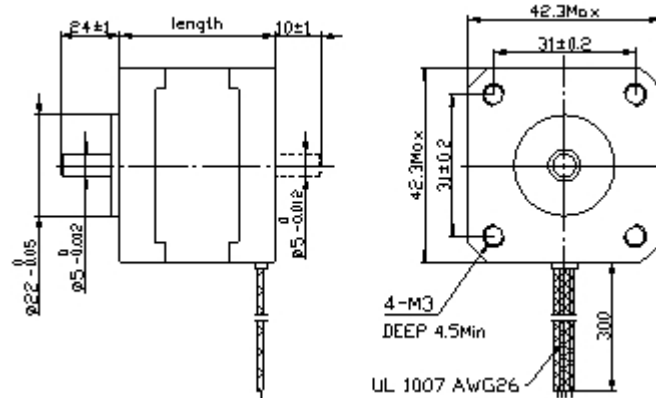
0.9 Size 42mm High Torque Hybrid Stepping Motor

Item	Specifications
Step Angle	0.9°
Step Angle Accuracy	±5% (full step, no load)
Resistance Accuracy	±10%
Inductance Accuracy	±20%
Temperature Rise	80 °C Max. (rated current, 2 phase on)
Ambient Temperature	-20 °C ~ +50 °C
Insulation Resistance	100MΩMin. ,500VDC
Dielectric Strength	500VAC for one minute
Shaft Radial Play	0.02Max. (450 g-load)
Shaft Axial Play	0.08Max. (450 g-load)
Max. radial force	28N (20mm from the ange)
Max. axial force	10N

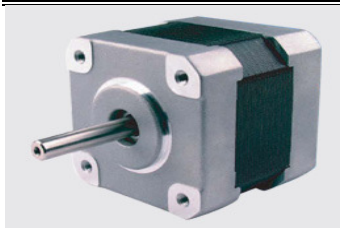
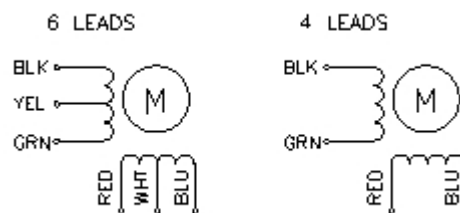
Size 42mm High Torque Hybrid Stepping Motor Specifications

Model No.		Rated Voltage	Current /Phase	Resistance /Phase	Inductance /Phase	Holding Torque	# of Leads	Rotor Inertia	Weight	Detent Torque	Length
Single Shaft	Double Shaft	V	A	Ω	mH	Kg-cm		g-cm ²	kg	g-cm	mm
SM42HT33-0956MA	SM42HT33-0956MB	4	0.95	4.2	4	1.58	6	35	0.22	200	33
SM42HT33-0606MA	SM42HT33-0606MB	6	0.6	10	9.5	1.58	6				
SM42HT33-0316MA	SM42HT33-0316MB	12	0.31	38.5	33	1.58	6				
SM42HT33-1334MA	SM42HT33-1334MB	2.8	1.33	2.1	4.2	2.2	4	54	0.28	220	39
SM42HT38-1206MA	SM42HT38-1206MB	4	1.2	3.3	3.4	2.59	6				
SM42HT38-0806MA	SM42HT38-0806MB	6	0.8	7.5	6.7	2.59	6				
SM42HT38-0406MA	SM42HT38-0406MB	12	0.4	30	30	2.59	6				
SM42HT38-1684MA	SM42HT38-1684MB	2.8	1.68	1.65	3.2	3.3	4	68	0.35	250	47
SM42HT47-1206MA	SM42HT47-1206MB	4	1.2	3.3	4	3.17	6				
SM42HT47-0806MA	SM42HT47-0806MB	6	0.8	7.5	10	3.17	6				
SM42HT47-0406MA	SM42HT47-0406MB	12	0.4	30	38	3.17	6				
SM42SHT47-1684MA	SM42HT47-1684MB	2.8	1.68	1.65	4.1	4.4	4				

Dimension



Wiring Diagram



3.6° Size 42mm High Torque Hybrid Stepping Motor

Technique parameter

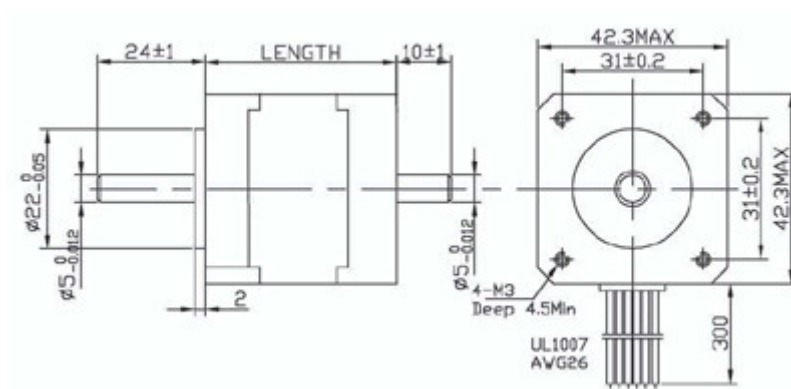
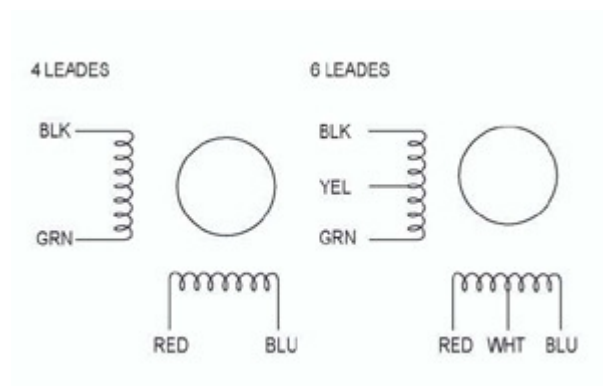
Item	Specification
Step Angle Accuracy	$\pm 5\%$ □ full step, no load □
Resistance Accuracy	$\pm 10\%$
Inductance Accuracy	$\pm 20\%$
Temperature Rise	80 □ Max. (rated current, 2 phase on)
Ambient Temperature	-10 □ - +50 □
Insulation Resistance	100MΩ Min. 500VDC
Dielectric Strength	500VAC for one minute
Shaft Radial Play	0.06Max. (450 g-load)
Shaft Axial Play	0.08Max. (450 g-load)

Technique Specification

Model No.		Rated Voltage	Current /Phase	Resistance /Phase	Inductance /Phase	Holding Tprque		#Of Leads	Rotor Inertia	Weight	Length
Single Shaft	Double Shaft	V	A	Ω	mH	Oz-in	g-cm		g-cm ²	Kg	mm
SM42HT34-0954DA	SM42HT34-0954DB	9.31	0.095	98	200	7.2	530	4	20	0.20	34
SM42HT38-0954DA	SM42HT38-0954DB	9.98	0.095	105	330	9.7	700	4	23	0.23	38

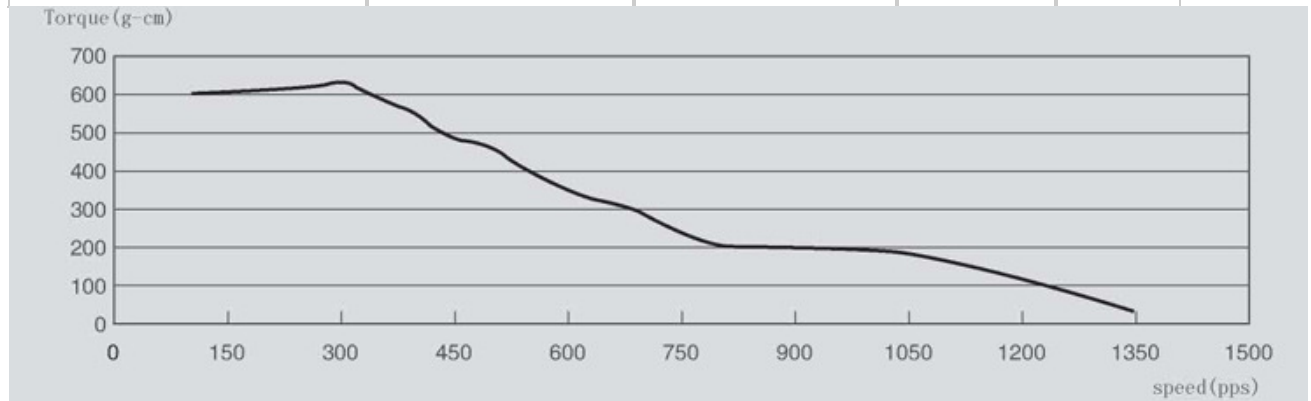
Dimensions

Wiring Diagram

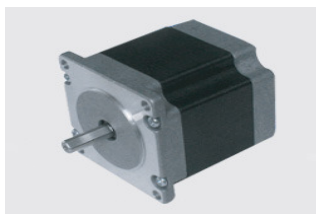
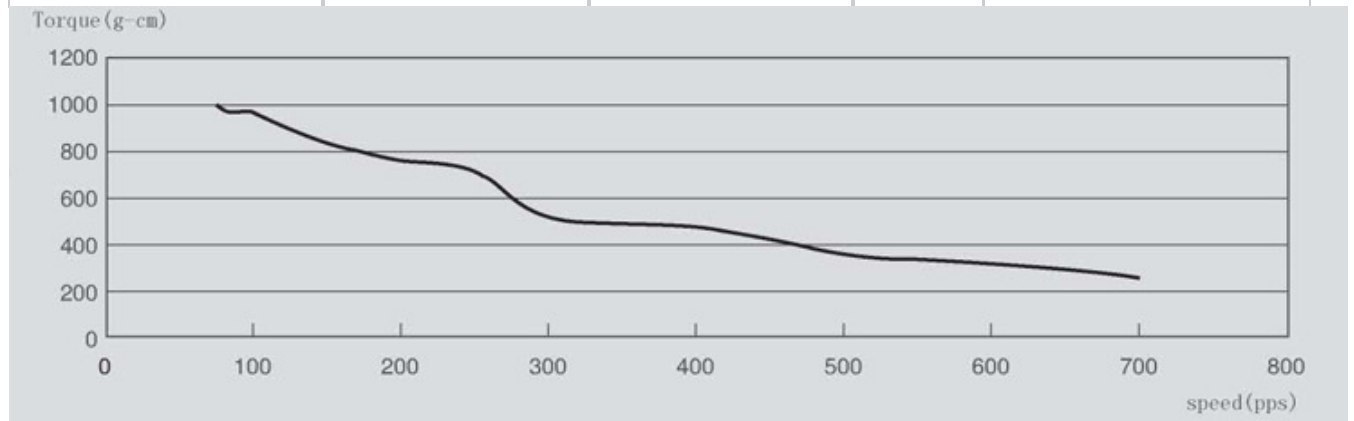


Pull out torque curve

MODEL:SM42HT34-0954DA	CURRENT:0.095AVOLTAGE:24VDC	FULL STEP	A
-----------------------	-----------------------------	-----------	---



MODEL:SM42HT38-0954DA	CURRENT:0.095AVOLTAGE:24VDC	FULL STEP	B
-----------------------	-----------------------------	-----------	---



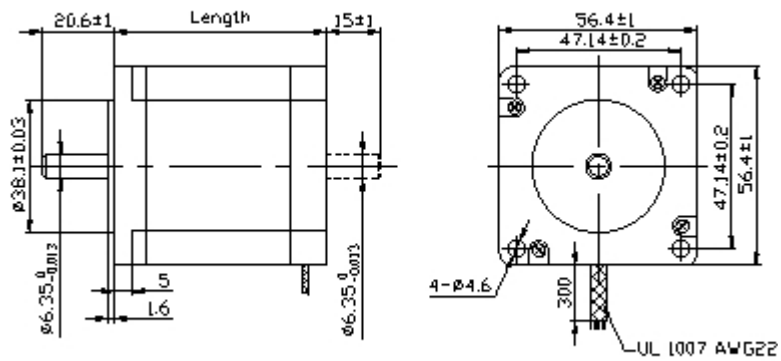
0.9°Size 57mm High torque Hybrid Stepping Motors

Item	Specifications
Step Angle	0.9°
Step Angle Accuracy	±5% (full step, no load)
Resistance Accuracy	±10%
Inductance Accuracy	±20%
Temperature Rise	80 °C Max.(rated current,2 phase on)
Ambient Temperature	-20 °C~+50 °C
Insulation Resistance	100MΩMin. ,500VDC
Dielectric Strength	500VAC for one minute
Shaft Radial Play	0.02Max. (450 g-load)
Shaft Axial Play	0.08Max. (450 g-load)
Max. radial force	75N (20mm from the flange)
Max. axial force	15N

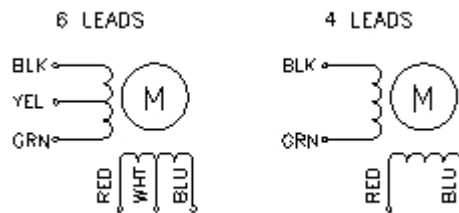
Size 57mm High Torque Hybrid Stepping Motor Specifications

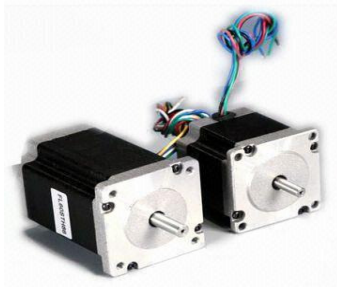
Model No.		Rated Voltage	Current /Phase	Resistance /Phase	Inductance /Phase	Holding Torque	# of Leads	Rotor Inertia	Weight	Detent Torque	Length
Single Shaft	Double Shaft	V	A	Ω	mH	kg-cm		g-cm ²	kg	kg-cm	mm
SM57HT41-1006MA	SM57HT41-1006MB	5.7	1	5.7	8.0	3.9	6	120	0.45	0.21	41
SM57HT41-2006MA	SM57HT41-2006MB	2.8	2	1.4	2.2	3.9	6				
SM57HT41-3006MA	SM57HT41-3006MB	1.9	3	0.63	1.0	3.9	6				
SM57HT41-2804MA	SM57HT41-2804MB	2	2.8	0.7	2.2	5.5	4				
SM57HT56-1006MA	SM57HT56-1006MB	7.4	1	7.4	17.5	9.0	6	300	0.7	0.4	56
SM57HT56-2006MA	SM57HT56-2006MB	3.6	2	1.8	4.5	9.0	6				
SM57HT56-3006MA	SM57HT56-3006MB	2.3	3	0.75	1.9	9.0	6				
SM57HT56-2804MA	SM57HT56-2804MB	2.5	2.8	0.9	4.5	12.0	4				
SM57HT76-1006MA	SM57HT76-1006MB	8.6	1	8.6	23	13.5	6	480	1	0.68	76
SM57HT76-2006MA	SM57HT76-2006MB	4.5	2	2.25	5.6	13.5	6				
SM57HT76-3006MA	SM57HT76-3006MB	3	3	1	2.6	13.5	6				
SM57HT76-2804MA	SM57HT76-2804MB	3.2	2.8	1.13	5.6	18.0	4				

Dimension



Wiring Diagram





1.8°Size 57mm High Torque Hybrid Stepping Motor

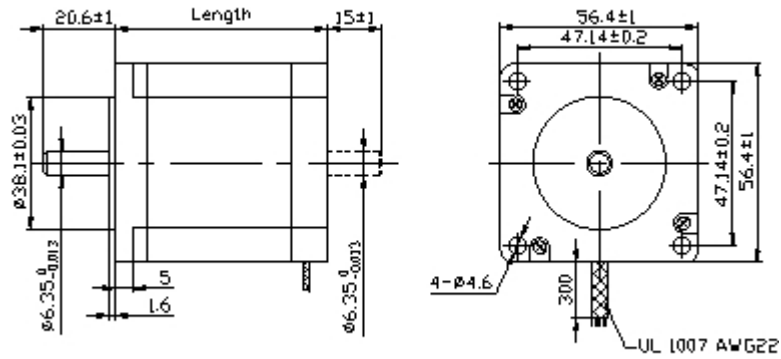
Item	Specifications
Step Angle	1.8°
Step Angle Accuracy	±5% (full step, no load)
Resistance Accuracy	±10%
Inductance Accuracy	±20%
Temperature Rise	80° C Max.(rated current,2 phase on)
Ambient Temperature	-20° C~+50° C
Insulation Resistance	100MΩMin. ,500VDC
Dielectric Strength	500VAC for one minute
Shaft Radial Play	0.02Max. (450 g-load)
Shaft Axial Play	0.08Max. (450 g-load)
Max. radial force	75N (20mm from the ange)
Max. axial force	15N
Rotation	CW(See from Front ange)

Size 57mm High Torque Hybrid Stepping Motor Specifications

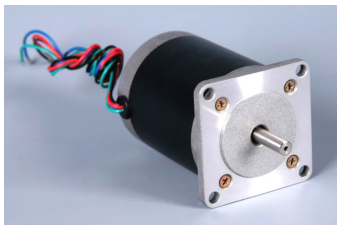
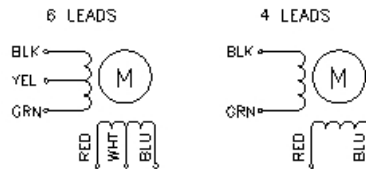
Model No.		Rated Voltage	Current /Phase	Resistance /Phase	Inductance /Phase	Holding Torque	# of Leads	Rotor Inertia	Weight	Detent Torque	Length
Single Shaft	Double Shaft	V	A	Ω	mH	kg-cm		g-cm ²	kg	kg-cm	mm
SM57HT41-1006A	SM57HT41-1006B	5.7	1	5.7	5.4	3.9	6	120	0.45	0.21	41
SM57HT41-2006A	SM57HT41-2006B	2.8	2	1.4	1.4	3.9	6				
SM57HT41-3006A	SM57HT41-3006B	1.9	3	0.63	0.6	3.9	6				
SM57HT41-2804A	SM57HT41-2804B	2	2.8	0.7	1.4	5.5	4				
SM57HT51-1006A	SM57HT51-1006B	6.6	1	6.6	8.2	7.2	6	275	0.65	0.36	51
SM57HT51-2006A	SM57HT51-2006B	3.3	2	1.65	2.2	7.2	6				
SM57HT51-3006A	SM57HT51-3006B	2.2	3	0.74	0.9	7.2	6				
SM57HT51-2804A	SM57HT51-2804B	2.3	2.8	0.83	2.2	10.1	4				
SM57HT56-1006A	SM57HT56-1006B	7.4	1	7.4	10	9.0	6	300	0.7	0.4	56
SM57HT56-2006A	SM57HT56-2006B	3.6	2	1.8	2.5	9.0	6				
SM57HT56-3006A	SM57HT56-3006B	2.3	3	0.75	1.1	9.0	6				
SM57HT56-2804A	SM57HT56-2804B	2.5	2.8	0.9	2.5	12.6	4				
SM57HT76-1006A	SM57HT76-1006B	8.6	1	8.6	14	13.5	6	480	1	0.68	76

SM57HT76-2006A	SM57HT76-2006B	4.5	2	2.25	3.6	13.5	6				
SM57HT76-3006A	SM57HT76-3006B	3	3	1	1.6	13.5	6				
SM57HT76-2804A	SM57HT76-2804B	3.2	2.8	1.13	3.6	18.9	4				

Dimension



Wiring Diagram



1.8° Size 57mm Hybrid Stepping Motor

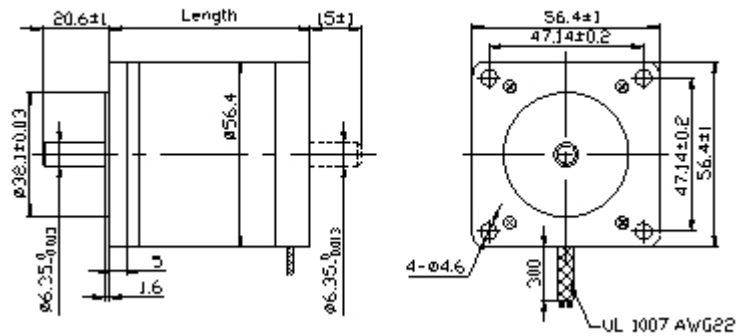
Item	Specifications
Step Angle	1.8°
Step Angle Accuracy	±5% (full step, no load)
Resistance Accuracy	±10%
Inductance Accuracy	±20%
Temperature Rise	80° C Max. (rated current, 2 phase on)
Ambient Temperature	-20° C ~ +50° C
Insulation Resistance	100MΩ Min. , 500VDC
Dielectric Strength	500VAC for one minute
Shaft Radial Play	0.02Max. (450 g-load)
Shaft Axial Play	0.08Max. (450 g-load)
Max. radial force	75N (20mm from the flange)
Max. axial force	15N

I Size 57mm Hybrid Stepping Motor Specifications

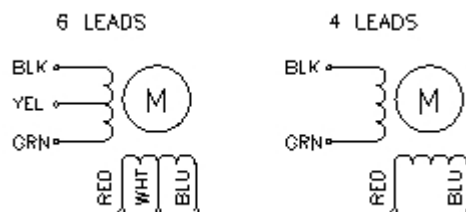
Model No.	Rated Current	Resistance	Inductance	Holding	# of Rotor	Weight	Detent	Length
-----------	---------------	------------	------------	---------	------------	--------	--------	--------

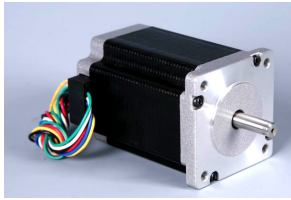
		Voltage /Phase		/Phase	/Phase	Torque	Leads	Inertia		Torque	
Single Shaft	Double Shaft	V	A	Ω	mH	kg-cm		$g-cm^2$	kg	kg-cm	mm
SM57ST41-1106A	SM57ST41-1106B	4	1.1	3.6	3.6	2.88	6	57	0.54	0.18	41
SM57ST41-0406A	SM57ST41-0406B	12	0.4	30	30	2.88	6				
SM57ST41-1564A	SM57ST41-1564B	2.8	1.56	1.8	3.6	4.0	4				
SM57ST51-0856A	SM57ST51-0856B	6	0.85	7.1	9	4.97	6	110	0.60	0.35	51
SM57ST51-0426A	SM57ST51-0426B	12	0.42	29	36	4.97	6				
SM57ST51-2804A	SM57ST51-2804B	2.38	2.8	0.85	2.1	6.9	4				
SM57ST56-1206A	SM57ST56-1206B	6	1.2	5	8	6.05	6	135	0.65	0.42	56
SM57ST56-0606A	SM57ST56-0606B	12	0.6	20	32	6.05	6				
SM57ST56-2554A	SM57ST56-2554B	2.8	2.55	1.1	3.6	8.4	4				
SM57ST76-1506A	SM57ST76-1506B	5.4	1.5	3.6	6	9	6	200	0.95	0.72	76
SM57ST76-0686A	SM57ST76-0686B	12	0.68	17.7	30	9	6				
SM57ST76-3304A	SM57ST76-3304B	2.7	3.3	0.85	3	12.5	4				

Dimension



Wiring Diagram





1.8° Size 60mm High Torque Hybrid Stepping Motor

Item	Specifications
Step Angle	0.9°
Step Angle Accuracy	±5% (full step, no load)
Resistance Accuracy	±10%
Inductance Accuracy	±20%
Temperature Rise	80 °C Max.(rated current,2 phase on)
Ambient Temperature	-20 °C~+50 °C
Insulation Resistance	100MΩMin. ,500VDC
Dielectric Strength	500VAC for one minute
Shaft Radial Play	0.02Max. (450 g-load)
Shaft Axial Play	0.08Max. (450 g-load)
Max. radial force	75N (20mm from the flange)
Max. axial force	15N

Size 60mm High Torque Hybrid Stepping Motor Specifications

Model No.			Rated Voltage	Current	Resistance	Inductance	Holding Torque	# of Leads	Rotor Inertia	Weight	Detent Torque	Length
Single Shaft	Double Shaft		V	A	/Phase Ω	/Phase mH	kg-cm		g-cm ²	kg	kg-cm	mm
SM60HT45-2008AF	SM60HT45-2008BF	unipolar	3	2	1.5	2	7.8	8	275	0.6	0.5	47
		parallel	2.1	2.8	0.75	2	11					
		series	4.2	1.4	3.0	8	11					
SM60HT56-2008AF	SM60HT56-2008BF	unipolar	3.6	2	1.8	3.6	11.7	8	300	0.77	0.7	56
		parallel	2.52	2.8	0.9	3.6	16.5					
		series	5.04	1.4	3.6	14.4	16.5					
SM60HT65-2008AF	SM60HT65-2008BF	unipolar	4.8	2	2.4	4.6	15	8	570	1.2	0.9	67
		parallel	3.36	2.8	1.2	4.6	21					
		series	6.72	1.4	4.8	18.4	21					
SM60HT86-2008AF	SM60HT86-2008BF	unipolar	6	2	3	6.8	22	8	840	1.4	1.0	88
		parallel	4.17	2.8	1.5	6.8	31					
		series	8.4	1.4	6	27.2	31					



1.8° Size 86mm Round Standard Hybrid Stepping Motor

General Specification for Hybrid Stepping Motor

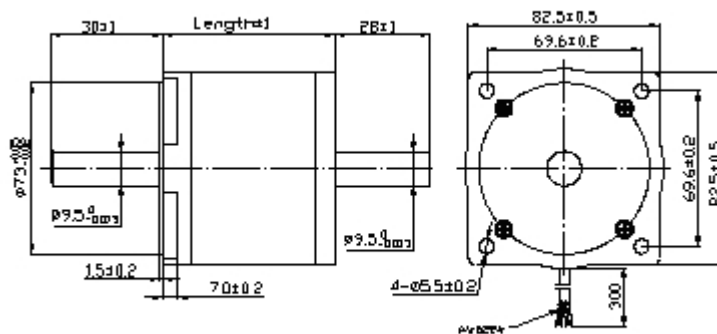
Item	Specifications
Step Angle	1.8°
Step Angle Accuracy	±5% (full step, no load)
Resistance Accuracy	±10%
Inductance Accuracy	±20%
Temperature Rise	80 °C Max.(rated current,2 phase on)
Ambient Temperature	-20 °C~+50 °C
Insulation Resistance	100MΩMin. ,500VDC
Dielectric Strength	1500VAC for one minute

Shaft Radial Play	0.02Max. (450 g-load)
Shaft Axial Play	0.08Max. (450 g-load)
Max. radial force	220N (20mm from the flange)
Max. axial force	60N
Rotation	CW(See from Front Flange)

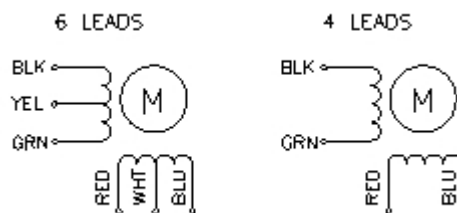
Size 86mm High Torque Hybrid Stepping Motor Specifications

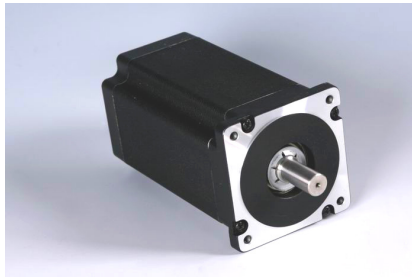
Model No.		Rated Voltage	Current /Phase	Resistance /Phase	Inductance /Phase	Holding Torque	# of Leads	Rotor Inertia	Weight	Detent Torque	Length
Single Shaft	Double Shaft	V	A	Ω	mH	Kg.cm		g-cm ²	kg	kg-cm	mm
SM86ST62-4506A	SM86ST62-4506B	1.8	4.5	0.4	1.4	13	6	560	1.5	0.8	62
SM86ST62-1256A	SM86ST62-1256B	5.5	1.25	4.4	14	13	6				
SM86ST62-1406A	SM86ST62-1406B	0.7	14	20	60	13	6				
SM86ST62-5904A	SM86ST62-5904B	1.33	5.9	0.23	1.5	18	4				
SM86ST94-4006A	SM86ST94-4006B	3.0	4.0	0.75	4.5	26	6	1100	2.6	2.4	94
SM86ST94-2006A	SM86ST94-2006B	6.0	2.0	3.0	13	26	6				
SM86ST94-1006A	SM86ST94-1006B	12	1	12	72	26	6				
SM86ST94-5604A	SM86ST94-5604B	2.1	5.6	0.38	3.9	35	4				
SM86ST134-6706A	SM86ST134-6706B	3.0	6.7	0.45	2	36	6	1800	3.6	3.6	134
SM86ST134-4006A	SM86ST134-4006B	5.0	4.0	1.25	6.6	36	6				
SM86ST134-1806A	SM86ST134-1806B	12	1.8	6.5	41	36	6				
SM86ST134-5604A	SM86ST134-5604B	3.5	5.6	0.63	6.6	50	4				

Dimension



Wiring Diagram





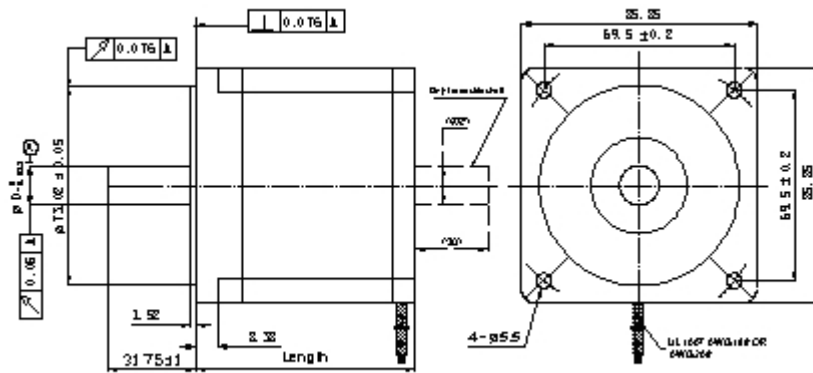
1.8°Size 86mm High Torque Hybrid Stepping Motor

Item	Specifications
Step Angle	1.8°
Step Angle Accuracy	±5% (full step, no load)
Resistance Accuracy	±10%
Inductance Accuracy	±20%
Temperature Rise	80°C Max.(rated current,2 phase on)
Ambient Temperature	-20°C~+50°C
Insulation Resistance	100MΩMin. ,500VDC
Dielectric Strength	820VAC , 1s , 3mA
Shaft Radial Play	0.02Max. (450 g-load)
Shaft Axial Play	0.08Max. (450 g-load)
Max. radial force	220N (20mm from the flange)
Max. axial force	60N

Size 86mm High Torque Hybrid Stepping Motor Specifications

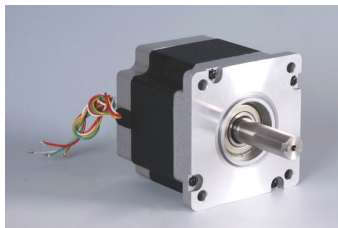
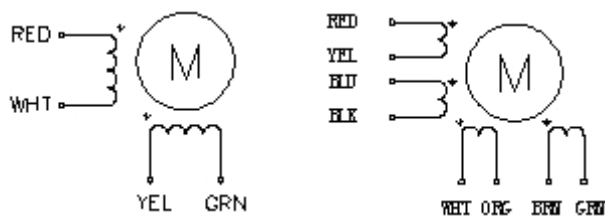
Model No.		Current /Phase	Resistance /Phase	Inductance /Phase	Holding Torque (Bipolar)	# of Leads	Rotor Inertia	Weight	Detent Torque	Length
Single Shaft	Double Shaft	A	Ω	mH	Kg.cm	#	g-cm ²	kg	kg-cm	mm
SM86HT65-5904A	SM86HT65-5904B	5.9	0.28	1.7	34	4	1000	1.7	0.8	65
SM86HT65-2808A	SM86HT65-2808B	2.8	1.4	3.9	34	8				
SM86HT80-5504A	SM86HT80-5504B	5.5	0.46	4	46	4	1400	2.3	1.2	80
SM86HT80-4208A	SM86HT80-4208B	4.24	0.75	3.4	46	8				
SM86HT118-6004A	SM86HT118-6004B	6	0.6	6.5	87	4	2700	3.8	2.4	118
SM86HT118-4208A	SM86HT118-4208B	4.2	0.9	6	87	8				
SM86HT156-6204A	SM86HT156-6204B	6.2	0.75	9	122	4	4000	5.4	3.6	156
SM86HT156-4208A	SM86HT156-4208B	4.2	1.25	8	122	8				

Dimension



FL665TH66-2066 FL665TH66-2066	
FL665TH66-5066 FL665TH66-2066	
FL665TH110-6066 FL665TH110-2066	
FL665TH156-6066 FL665TH156-2066	

● WIRE DIAGRAM



1.8°Size 110mm High Torque Hybrid Stepping Motor

Item	Specifications
Step Angle	1.8°
Step Angle Accuracy	±5% (full step, no load)
Resistance Accuracy	±10%
Inductance Accuracy	±20%
Temperature Rise	80 °C Max.(rated current,2 phase on)
Ambient Temperature	-20 °C~+50 °C
Insulation Resistance	100MΩMin. ,500VDC
Dielectric Strength	1800VAC , 1s , 5mA
Shaft Radial Play	0.02Max. (450 g-load)
Shaft Axial Play	0.08Max. (450 g-load)
Max. radial force	220N (20mm from the flange)
Max. axial force	60N

Size 110mm High torque hybrid stepping motor specification:

Model No.	Current /Phase	Resistance /Phase	Inductance /Phase	Holding Torque	# of Leads	Rotor Inertia	Weight	Detent Torque	Length
Single shaft	A	Ω	mH	N.m	#	$g\text{-cm}^2$	kg	kg-cm	mm
SM110HT99-5504A	5.5	0.9	12	11.2	4	5500	5	3	99
SM110HT150-6504A	6.5	0.8	15	21	4	10900	8.4	5.9	150
SM110HT201-8004A	8	0.67	12	28	4	16200	11.7	7.5	201

Dimension :

